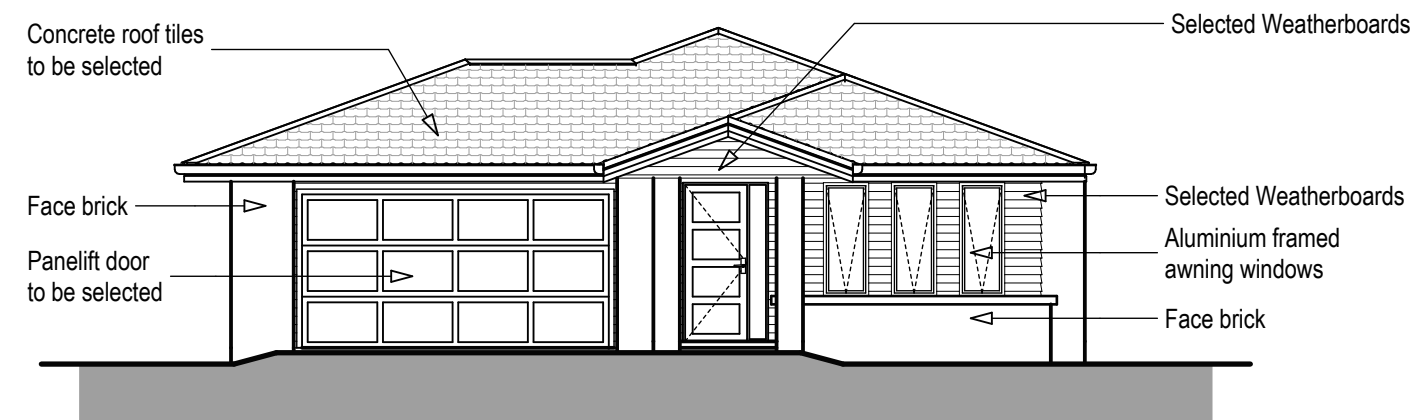
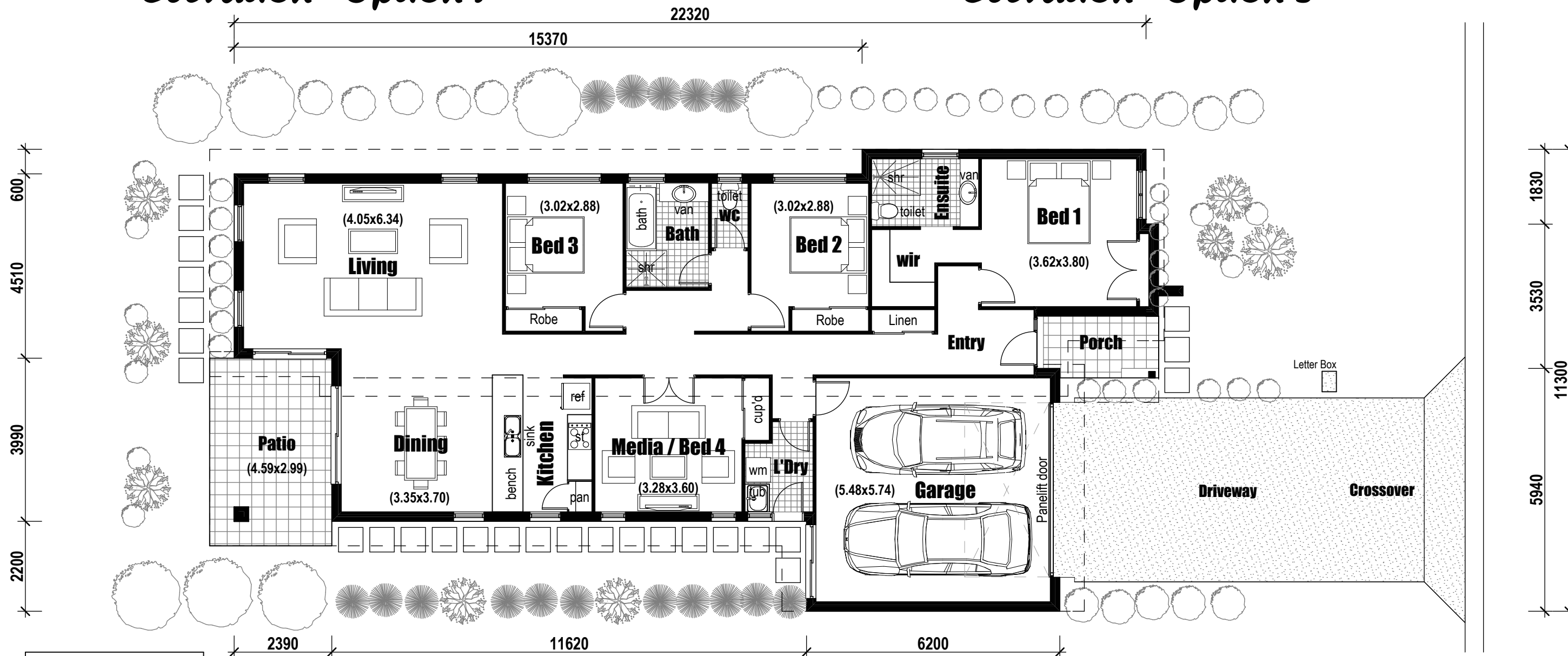


Elevation - Option 1



Elevation - Option 2



Floor Area	
Ground Floor	151.97m ²
Garage	34.17m ²
Porch	4.17m ²
Patio	9.54m ²
TOTAL	199.85m²

Floor Plan

Willowbank 200



**DESIGN
BUILDING
CONSTRUCTION**

PO Box 1030 Paradise Point 4216
Phone: 0438 881 208
Fax: 07 5564 1088
www.dbcqlld.com.au