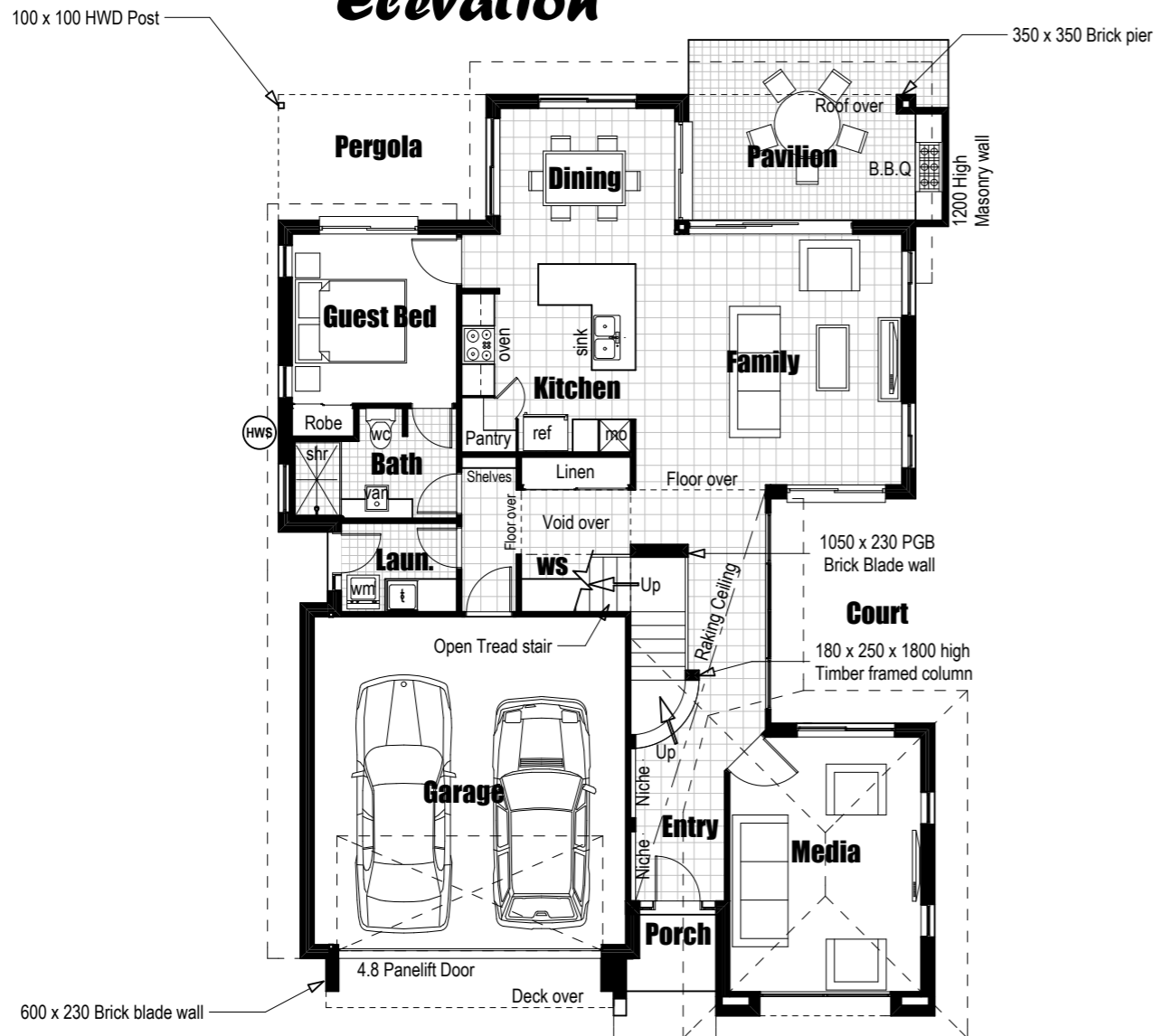
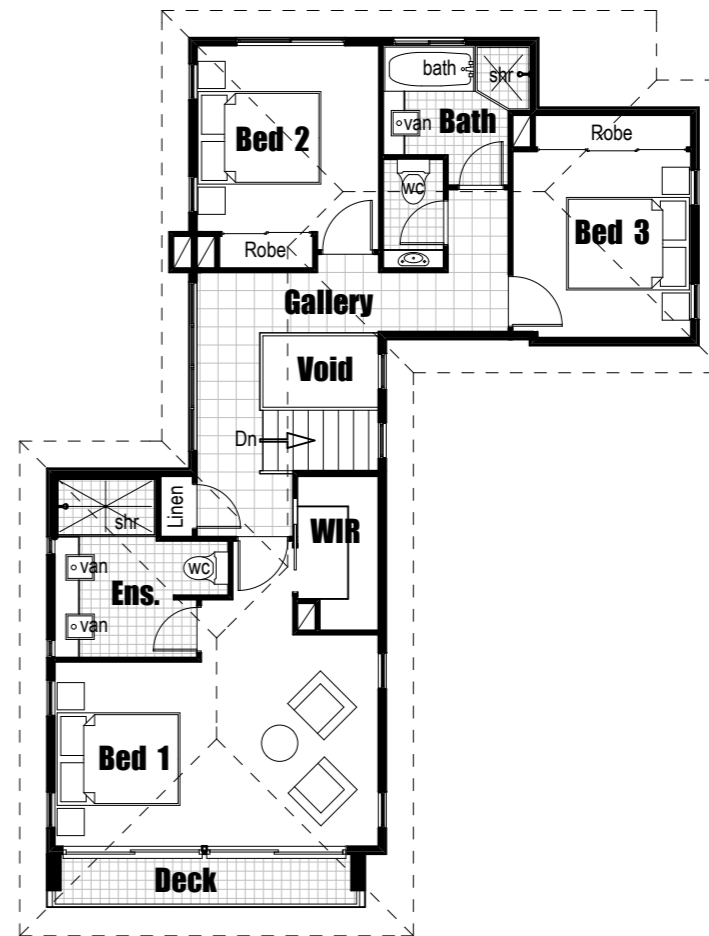




## Elevation



## Ground Floor Plan



## First Floor Plan

Floor Area's	
GROUND FLOOR	116.99
UPPER FLOOR	81.00
DECK	4.60
GARAGE	37.51
PAVILION	9.55
PORCH	2.24
	<b>251.89 m<sup>2</sup></b>

**Monaco 252**



**DESIGN  
BUILDING  
CONSTRUCTION**

PO Box 1030 Paradise Point 4216  
Phone: 5563 7913  
Mobile: 0438 881 208  
www.dbcqlld.com.au